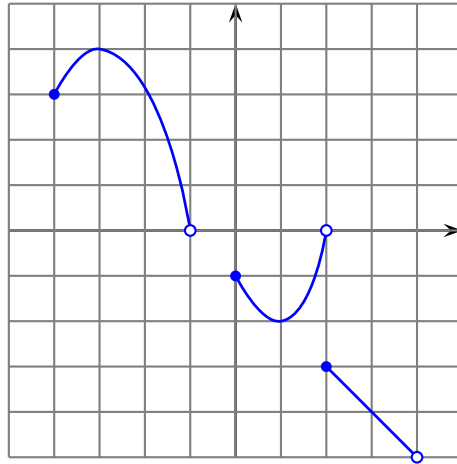


First Quiz for Math 30

1. Find the domain and range of the function whose graph is shown below:



2. Find the domain of the following two functions:

(a) $f(x) = \sqrt{4 - 3x}$

(b) $g(x) = \frac{3x}{x^2 - 16}$

(c) $f(x) = \sqrt{3 + x^2}$

3. Find the range of the following functions:

(a) $h(x) = 2x + 1$ with domain $(-2, 4]$.

(b) $g(x) = \frac{3}{x - 1}$

(c) $f(x) = x^2 + 4$